



NEWSLETTER



Tumuaki Pānui

Kia ora e te whānau,

It is great to be back at school again. What a positive start we have had- it is so lovely to have such warm weather! The sound, energy and joy of our tamariki being at school is a pleasure..

Highlights already

- Ākomanga(spaces) that are tidy, ordered and welcoming.
- Being sent examples of great work, especially stories
- Sandpit creations
- New programmes unfolding
- Rhubarb crumble made from our garden
- Everyone sharing the swing
- Groovy dancing to Friday music and attempts to walk on stilts providing great entertainment!
- Listening to the practice of Kapa haka as they get ready for Newtown Festival
- Year six learners getting ready for camp which is coming soon.
- Using the rope swings in the playground.

Thank you

We really appreciate the group of volunteers who helped give the playground a tidy up, plus fixed some broken parts of it so we can continue to use it. Thank you for your expertise and time. It is amazing how much of a difference this made from one afternoon's work.

Thank you to those who came to talk with kaiako last Wednesday. We have a much better understanding of how the year will be, knowing what you hope for your child and how we can work together.

Thank you for the routines, lunches, sunhats and organisation to get everyone here on time in the morning. We know it takes some perseverance, but it makes a difference to your child's learning.

Welcome: please keep an eye out for our new caretaker Khan. He used to be a student at this kura and has relatives here (that is your clue). Please introduce yourself and help him feel welcome.

At pick up and drop off, smile at someone new. Welcome the many families that are new to our kura. A smile and an introduction go a long way, for teachers and families. We want to be known by our actions at Newtown School for being a welcoming and inclusive community.

Share your skills

Let me know if you are willing to help with: landscaping and gardening. We will work together to develop parts of our school grounds.

Watch out for an invite to a picnic at school. Bring your takeaways or kai and hang out to play some games. Wednesday 5th March, 5-6:30pm.

We are looking forward to a great year. Enjoy a sunny weekend-make the most of the sunshine.

Ngā mihi nui,
Whaea Nicki
Tumuaki | Principal

WHĀNAUNGATANGA
CONNECTED

He iwi tahi tātou, he ako tahi tātou
We belong and we learn together

Important dates

- 17 February - Hearing & Vision screening
- 25-27 February - Year 6 Camp
- 2 March - Newtown Festival
- 5 March - School Picnic
- 10 March - Bee Healthy Dental Van Onsite
- 16 March - Weetbix Tryathlon
- 11 April - Last Day of Term 1
- 28 April - First Day of Term 2
- 27 June - Last Day of Term 2

Welcome to our new students

- Bella Cho
- Frankie Nix'O'Connor
- Holly Roberton
- Sidd Pascual
- Zebedee Anastasiadis-Gray
- Jamin Silvester
- Beatrix Belgrave
- Nived Sajay
- Nathaan Giri
- Ryder-Blaze Iraia
- Jithuni Dinayadura
- Ranshik Chandra
- Elidh Fletcher
- Ishmael Fletcher
- Miah Wilson
- Sereena Bal-an
- Wind Adlette Sandig
- Cotton Snow Sandig
- Nirav Malickal Sanish
- Aivy Thomas
- Inaaya Prasoon
- Mila Johnston
- Eliora Raisa Aranha
- Hollis-Moss Whitaker



04 389 6667



away@newtown.school.nz

IN THIS ISSUE

SCHOOL NOTICES
STAFF 2025
HE RANGA TIPU
STAFF SPOTLIGHT
ARTS NEWS
EXHIBITION WALL
SPORTS NEWS
GARDEN GOODNESS
COMMUNITY NOTICES

School Notices

Attendance

It is really important that all children attend school every day unless they are sick. Every day attendance increases learning. **If your child is going to be away please call or email us.**

- 04 389 6667
- away@newtown.school.nz

Hearing and Vision



New students that haven't had their hearing and vision checked yet are getting tested this Monday 17th February!



Bee Healthy Dental Van will be onsite 10 March - 4th April checking all children's teeth. You will be notified if your child requires any dental work.

Every day remember



NAMED CLOTHING



NAMED HAT



WATER BOTTLE



PLENTY OF FOOD

KIA NGĀKAU HIHIRI CURIOUS Ka miharo, ka tūpono, ka auaha tātou. We wonder, take risks and innovate

School Notices

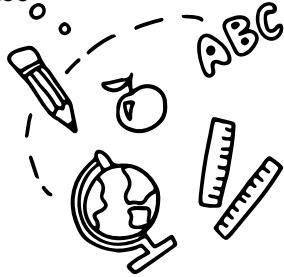
Magic Show

**NOW DUE
STATIONERY \$35**

Payment covers everything your children need in class.

Online Payments

**ACCOUNT
DETAILS**



Account Name: Newtown School Board
Bank: BNZ
Account number: 02 0576 0022421 00
Reference: Family name
Code: Stationery

Etpos & Cash payments available in the Office

FREE TICKETS!
FIRST IN FIRST SERVED
Please come to school office to claim your tickets. We will not be holding tickets.



Memorial Theatre – Vic University,
Student Union Building, Kelburn
Parade, Kelburn, Wellington @ 6pm

Before & After School Care available in the school hall
Contact sKids directly to book at skids.co.nz/book

skids



Book now at skids.co.nz/book
3rd February – 11th April

0800 274 172

Please ensure all food complies with allergy guidelines. Contact your service for detailed information.

TERM 1



Secure your spot today!
skids.co.nz

<p>3rd February – 7th February</p> <p>Pirates Ahoy Arrrgh me hearties! Set sail for adventure this week filled with swashbuckling games and nautical fun!</p>	<p>10th – 14th February</p> <p>Heart Beats Fun games, bubble play, baking, and arts & crafts to celebrate Valentine's day.</p>	<p>17th – 21st February</p> <p>Everyday Kindness Heroes Celebrating kindness & caring, paying it forward to our whanau, community and furry friends with Love a Pet day.</p>	<p>24th – 28th February</p> <p>Future Stars It's a double the fun this week with inclusive activities as we celebrate NZ Children's Day on 2nd March and the start of Ramadan.</p>	<p>3rd – 7th March</p> <p>Western Heroes We venture into the exciting Wild West, learn about cowboys, pioneers, and the frontier life.</p>
<p>10th – 14th March</p> <p>Where In The World Learn about the world through food, virtual travel to Disneyland, landmarks and food!</p>	<p>17th – 21st March</p> <p>Colour Carnival Games, sidewalk sketchers and popcorn Picasso. This week we celebrate it all as we prepare for World Colour Day on Friday 21st March.</p>	<p>24th – 28th March</p> <p>Build It Week This week's theme is an exciting blend of creative challenges to inspire teamwork, problem-solving, and innovation.</p>	<p>31st March – 4th April</p> <p>Laughter & Legends There is mischief and magic in store this week as we celebrate April Fools Day & International Children's Book Day.</p>	<p>7th – 11th April</p> <p>Egg-cellent Activities End-of-term festivities with egg-ceptional crafts, experiments, activities and egg hunts as we prepare for Easter.</p>

Terms and conditions go here

**KIA MANAAKI
RESPECTFUL**

**Ka whakamana tātou i ngā rongo o te katoa.
We value the thoughts and feelings of each other.**

School notices

Lunch orders are available through ezlunch. Subway on Wednesdays, Vietnamese on Thursdays & O'Sushi on Fridays
Order online...
www.ezlunch.co.nz

Dreams ahead for 2025

- Designing and fundraising towards our big playground
- Planting and gardening development
- Increased te reo across all the school
- Delight and love of learning flourish
- Tamariki and kaiako having lots of opportunities to share their passions and thrive.

Think about your own dreams and share them with us!

Congratulations to our kaiako!

Over the summer break teachers were challenged to read and log books with Read NZ.

Newtown School came second in New Zealand and have won a class set of books for the school!!!

If you want a book recommendation for you or your child talk to one of our teachers!



Easyswim Swim School at
Newtown School Pool

Babies, preschool, school age
and adult lessons are
available at Newtown School
Pool. Term time and holiday
programs available.

www.easyswim.co.nz
Email: book@easyswim.co.nz
Phone: 2347946

LUNCHTIME SWIMMING

It's back!
If students would like to swim on a Thursday lunchtime then make sure they have their togs at school so they can join the fun.

Teaching Teams for 2025

Teaching teams and their contact details

Whānau Tūī	Whānau Pōhutukawa	Whānau Piwakawaka	Whānau Harakeke	Whānau Waitangi	Ngati Kotahitanga
Karen karenf@newtown.school.nz	Mary maryb@newtown.school.nz	Megan meganj@newtown.school.nz	Kiran kiranl@newtown.school.nz	Alice alicec@newtown.school.nz	Maraea maraeap@newtown.school.nz
Debbie debbiep@newtown.school.nz	Kath kathf@newtown.school.nz	Lily lilyw@newtown.school.nz	Doreen doreenb@newtown.school.nz	Rhys rhysm@newtown.school.nz	Venise venisec@newtown.school.nz
+ roll growth teacher	Maddi maddison@newtown.school.nz	Chantel chantelb@newtown.school.nz	Luke luker@newtown.school.nz	Mitchell mitchellb@newtown.school.nz	Susie susieh@newtown.school.nz
He Ranga Tipu & supporting kaiako: Lauren, Mitch, Sally, Rekha, Lisa. Specialist resource teachers: Hine (Māori), Jenny (Literacy)				Luca lucah@newtown.school.nz	

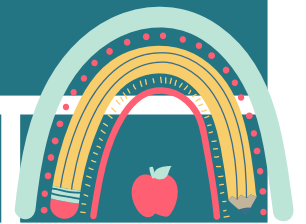
Support Staff Team for 2025

Teacher Assistants

Alysha	Sam	Rangimarie	Ruth	Kat	Nicole
Ameera	Ronnie	Mary	Janet	Chris	Lisa
&	Ella	Rangimarie & Janet will be supporting He Ranga Tipu and Māori medium			

We look forward to welcoming Divya back from maternity leave in Term 2

Melissa Admin	Sarah Admin	Sam Librarian	Tania Garden to table	Khan Caretaker
-------------------------	-----------------------	-------------------------	---------------------------------	--------------------------



Strategic Leadership Team

Nicki Read Principal/Tumuaki nickir@newtown.school.nz	Danielle Te Waiti Deputy Principal/Tumuaki Tuarua daniellet@newtown.school.nz	Debbie Purves Assistant Principal/Tumuaki Kaiāwhina debbiep@newtown.school.nz	Sarah Divers Learning Support Coordinator sarahd@newtown.school.nz
--	---	---	--



KIA WHAKAPAU KAHA Ka whakapua i ō tātou kaha i ā tātou mahi katoa.
EFFORT We give our best in everything we do.

“ He Ranga Tipu ”

He Ranga Tipu refers to the weaving together of our seedlings(children) with new learning in te reo Māori. It plays with the words rangatahi meaning young and rangatira meaning leader. It is the title we will use for our new bilingual thread which has begun in all akomanga in our English medium learning spaces. This term tamariki and kaiako will be learning new words and phrases relating to akomanga and kura - classroom and school.



Welcome to our Masters student Oliver



Tēnā koutou katoa. Ko Piritene te whakapaparanga mai. Engari, ko Whakatū te whenua tupu. Ka mihi au ki te maunga ko Pourangahau. Ka mihi au ki te awa ko Maitai. Tēnā kōrua, tēnā kōrua. Ko Te Whanganui a Tara te kāinga. Kei Tawatawa au e noho ana. Ko Oliver tōku ingoa. Tēnā tātou katoa.

Kia ora e ngā whanau o Te Kura o Ngā Puna Waiora.

My name is Oliver, and I'm a masters student training to be a teacher at Newtown School. I'm working with the wonderful team in Whānau Pīwakawaka this year. I'm a parent to two wonderful kids, Hazel and Patrick. They've certainly taught me a lot about what it means to be an educator, and I'm excited to learn even more from all the amazing kaiako and ākonga at Newtown School.

In a former life I studied geography and ecology so I have a keen interest in Te Ao Mārama, one I love sharing with tamariki. I also love maths, technology and cooking. In my free time I like to run, read books and play video games. I've just bought a mountain bike so you might see me zipping to kura in the morning.

I've been at Newtown School for only a short time so far, but already I can feel how special a place it is. I can't wait to see what this year is going to bring!

Supporting our local artist Paul Forrest



For the last 3 months Newtown School's drawing tutor Paul Forrest has had his giant butterfly kaleidoscope 'Bring back the natives' installed at the Auckland Botanic Gardens as part of 'Sculpture in The Gardens'. The event finishes on March 2nd when they will then announce the People's Choice Award. If you wish to support him here's the online link to be able to vote and also find out more about his sculpture: <https://www.sculptureinthegardens.nz/ap24-25-paul-forrest>



Arts News

MUSICAL OPPORTUNITIES AT NEWTOWN SCHOOL

We are super lucky to have some many amazing opportunities to make music at Newtown School.

Music lessons

Violin - after school on a Thursday - no cost

Trumpet, trombone or French horn - after school on a Thursday - no cost

ENROL: Arohanui Strings+ <https://www.arohanuistrings.org/>

Group keyboard lessons during school time - \$18.50 per week

Group guitar lessons during school time - \$18.50 per week

Group drum lessons during school time - \$18.50 per week

ENROL: Dynamite Music <https://dynamitemusic.co.nz/newtown/>

Artsplash choir

We are very excited that 2025 is Artsplash year! On 25th or 26th August (date and time tbc) we will be joining with many school choirs across Wellington to take part in a concert at the Michael Fowler Centre.

We will have lots of songs to learn, and actions to figure out.

If your child is year 3-6 and would like to take part please let Kath know via email or in person. Rehearsals will take place within school time, possibly in a lunchtime starting towards the end of term 1. We took part 2 years ago and the students involved LOVED the experience!

If you would like your tamariki to get involved please contact Kath at arts@newtown.school.nz



DRAMA AFTER SCHOOL AT NEWTOWN SCHOOL

Learn theatre skills through fun games and original performances with Splat! Drama after school on Thursdays. Free trial class for new students!

To find out more or to enrol visit www.splatnz.com or contact Josh at josh@splatnz.com or on 027 621 6599



Exhibition Wall

'Artworks by Mila Ward'

Friday Feb 7th - Monday Feb 24th

The Newtown School exhibition wall

Newtown school celebrates the first exhibitor on the exhibition wall for 2025 and it's Mila Ward from Whānau Waitangi.

Mila was part of a group show in late 2024 and the quality of her work in that show made quite an impression so I asked her if she was up to having her first solo exhibition. One of the delights in curating these exhibitions is that I'm constantly being surprised by the maturity of skills these young artists have.

I'm very proud of Mila and I look forward to watching this young creative talent blossom even further during her final years at Newtown School. Come and have a look and support her efforts. Yet another great exhibition I recommend you check it out on 'The Exhibition Wall' at Newtown School. Only for 2 weeks so make sure you do.

-Paul

KIA WHAKAPAU KAHA Ka whakapua i ō tātou kaha i ā tātou mahi katoa.
EFFORT We give our best in everything we do.

Sports News

TERM 1 SPORTS

All sports teams are being finalised this week. Team lists and draws can be found in the window behind the small playground from next week onwards.

LUNCHTIME P.E.

The P.E. shed will be starting back up shortly to get equipment out at lunch time. Our tamariki have loved being able to use different equipment each day to play and connect.

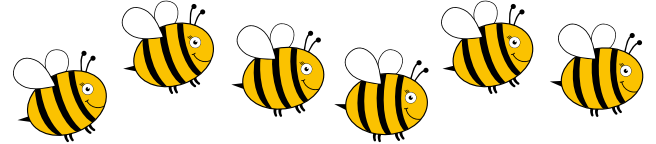
SPORTS COORDINATORS

Any further enquiries can be made to our sports coordinators at sports@newtown.school.nz



Garden Goodness

Composting at school



Thanks to our flash new composting set up, We're ready to accept food scraps from 20 households within our school community.

If you don't have a compost bin or worm farm at your home and currently put your food scraps into your rubbish bin please come and see Tania or email her at taniaa@newtown.school.nz.



Community Notices

Have your say on disability support services

Community consultation in Wellington

- Newtown Community Centre
17 February, 10am–12.30pm
- Lower Hutt Events Centre
18 February, 10am–12.30pm
- Pātaka, Porirua
19 February, 10am–12.30pm

Register and find out more at disabilitysupport.govt.nz/consultation

Disability Support Services

MINISTRY OF SOCIAL DEVELOPMENT

To Kāwanatanga o Aotearoa

Flutter
Koha show
Sunday 23rd February
Saturday 8th March
11.30am
Zealandia
Te Māra a Tāne

FRINGE
DATE FESTIVAL

FAIRIES PLAYING FOOTBALL
21st - 23rd FEBRUARY
CIRCUS HUB, NEWTOWN

FRINGE
14 FEBRUARY - 8 MARCH

TICKETS & INFO AT FRINGE.CO.NZ

WHĀNAUNGATANGA
CONNECTED

He iwi tahi tātou, he ako tahi tātou
We belong and we learn together

Community Notices

Petone Rotary Fair Car Parking



Petone Central School
Saturday 15th Feb
Open from 8:00am

Fundraising for Year 7/8 leadership trips



Closest to the Fair



Resilience Clinical Psychology



Secret Agent Society (SAS)

Small Group Program for 8-12 Year Olds

Resilience Psychology Wellington is proud to be working on becoming a Secret Agent Society (SAS) programme provider with the aim to run our first programme in March 2025.

We want to hear from parents who would be interested in this programme for their children- please contact us at the email address/ phone number below.

The Secret Agent Society is an evidence-based programme to help children experiencing:

- Anger
- Anxiety
- Attention Deficit Hyperactivity Disorder (ADHD)
- Autism
- Social Difficulties
- Emotional Difficulties

SAS is an evidence-based, neurodivergent-affirming programme designed for children aged 8 to 12 years old who are experiencing a range of social and emotional challenges. It's a fun, espionage/spy/detective themed programme that helps children to learn how to feel happier, calmer and braver. It uses a trained psychologist as a facilitator alongside web-based computer game tools that make learning fun and engaging.

Children working through the Secret Agent Society group will be provided with tools to:

- Recognise emotions in themselves and others
- Express their feelings in appropriate ways
- Cope with feelings of anger and anxiety
- Communicate and play with others
- Cope with mistakes, transitions and challenges
- Build and maintain friendships
- Solve social problems
- Prevent and manage bullying and teasing
- Acknowledge their personal strengths



The programme involves:

- Parent Intake Session
- Child Cadet Meet and Greet with SAS Facilitator
- 9 Child Cadet Sessions (1.5 hours each)
- 3 Parent Sessions (2 hours each)
- 1 Follow-Up Session (9 Weeks Post-Completion of Program)

If you are interested in your child participating in this programme, please contact Resilience Psychology admin@resiliencepsychology.co.nz or 09 390 0040.

For more information about SAS, visit the website

<https://www.secretagentsociety.com/>

Please note, there is an investment for parents of approximately \$2000 for the entire programme which can be paid in instalments over the programme. Please talk with us if this presents a challenge for your family.

09 390 0040

admin@resiliencepsychology.co.nz

@resilience_psychology

www.resiliencepsychology.co.nz

A magical puppetry experience for the whole whanau!
 DI FILIPPO MARIONETTE 'APPESO AD UN FILO' (Hanging By a Thread)

Pōneke is delighted to welcome, for 1 show only, the artisan theatre company, Di Filippo Marionette from Italy!

For families and puppet fans alike, delight in the playful interaction between puppet and puppeteer, as they share stories through poetic movement and music, creating an enchanting and intriguing show described as a magical experience for both children and adults. This is a rare and precious opportunity for your whanau to experience high quality marionette theatre from Europe, not to be missed!

Sunday 16 Feb 2025, 11.00 am - 12.00 pm

Vogelmorn Bowling Club (Upstairs), 93 Mornington Road, Brooklyn, Wellington

\$14 General admission (under 3's free on laps) or \$50 for family x 4

Ticket link: <https://www.eventfinda.co.nz/2025/di-filippo-marionette/wellington>



TENNIS COACHING

Sundays Term 1
9am – 12pm

Learn to play tennis now!
 FREE try-out lesson.

clubspark.kiwi/kilbirnie/juniors/hotshots



Kilbirnie Tennis Club

CRICKET WELLINGTON

GIRLS SMASH

WHO: School kids in years 3/4, 5/6 & 7/8

WHAT: Short & fun 6 aside cricket games

WHEN: 4pm - 5pm: Mondays &/or Tuesdays (venue dependant)

WHERE: Alex Moore Park, Fraser Park, Kelburn Park, Wakefield Park

COST: \$30 per player or \$180 per team

KIA MANAHAU E hia hinganga, katū tonu, ka ako tonu
RESILIENT We keep trying and learn from what we do